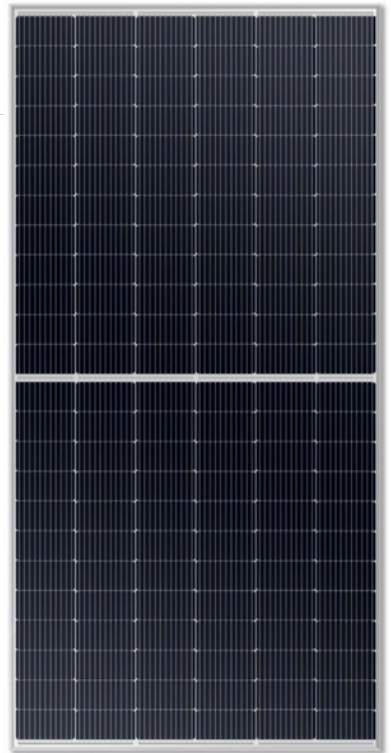


MOTECH

POWER UP NOW



HALF CUT 144 CELL

N TYPE MONOCRYSTALLINE MODULE

570-595W

POWER OUTPUT RANGE

23.03%

MAXIMUM EFFICIENCY

0~+3%

POSITIVE POWER TOLERANCE

MBB

MULTI BUSBAR TECHNOLOGY

N-TYPE TOPCON CELL
TECHNOLOGY

PRODUCTS

Utility Series

POWER RANGE

570-595W



High power Mono Perc

- Up to 595W front power and 23.03% module efficiency with half cut tech
- MBB Technology Better light trapping and current collection to improve module power output and reliability.
- Lower resistance and good reflection effect of MBB ensure high power



High reliability

- Ensured PID resistance through cell process and module material control
- Resistant to salt, acid and ammonia
- Proven to be reliable in high temperature and humidity areas
- Certified to fire class A
- Minimizes micro-crack and snail trails
- Mechanical performance: Up to 5400 Pa positive load and 2400 Pa negative
- The N-type module with Hot 2.0 technology has better reliability and lower LID/LETID.



High energy generation

- Up to 25% additional power gain from back side depending on the design
- Excellent current and low light performance validated by 3rd party
- Perfect cell process and module material optimization
- Lower temp coefficient (-0.29%) and NMOT bring more energy
- Better anti-shading performance and lower operating temperature



Easy to install

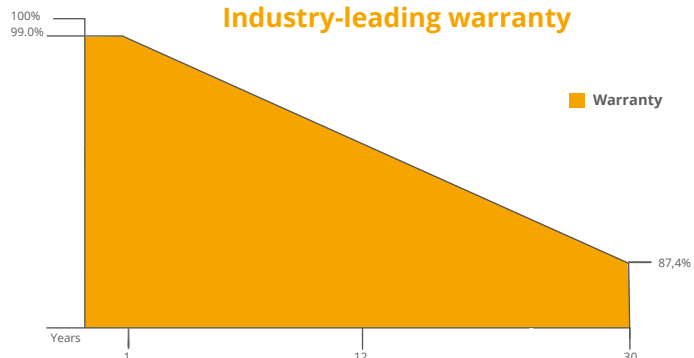
- Frame design makes module compatible with all racking and installation methods
- Easy to handle and install as normal framed module during transportation

SYSTEM CERTIFICATES

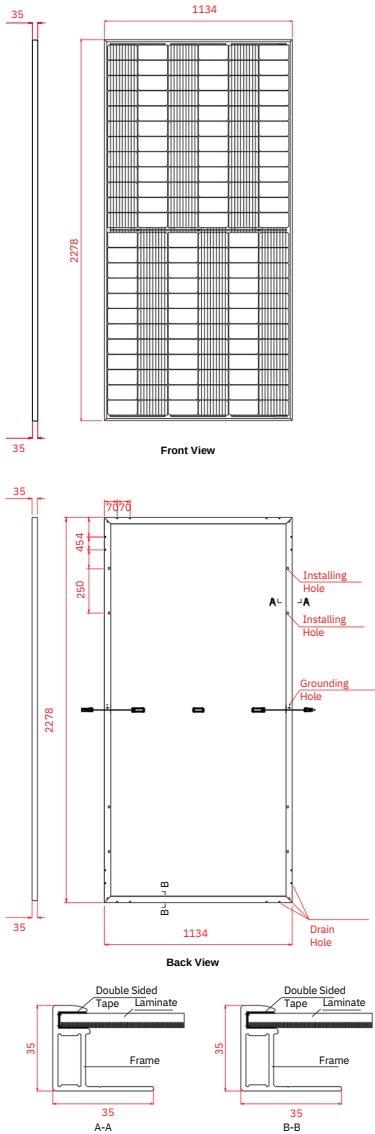
IEC61215/IEC61730/IEC61701/IEC62716
 ISO 9001: Quality Management System
 ISO 14001: Environmental Management
 ISO45001: Occupational Health and Safety



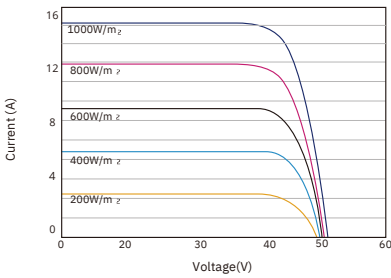
Industry-leading warranty



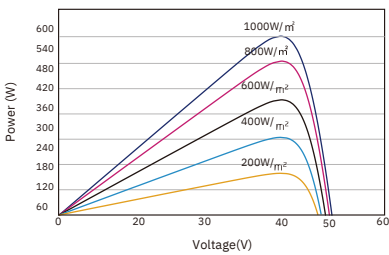
DIMENSIONS OF PV MODULE(mm)



I-V CURVES OF PV MODULE(595W)



P-V CURVES OF PV MODULE(595W)



ELECTRICAL DATA (STC)

	570	575	580	585	590	595
Peak Power Watts-PMAX (Wp)*	570	575	580	585	590	595
Power Tolerance Range-PMAX (W)	0 ~ +5					
Maximum Power Voltage-VMPP	42,40	42,60	42,75	42,90	43,10	43,25
(V) Maximum Power Current-IMPP	13,44	13,50	13,57	13,64	13,69	13,76
(A) Open Circuit Voltage-VOC (V)	50,88	51,12	51,30	51,48	51,72	51,90
Short Circuit Current-ISC (A)	14,18	14,24	14,31	14,38	14,44	14,51
Module Efficiency % (m (%))	22,07	22,26	22,45	22,65	22,84	23,03

STC: Irradiance 1000W/m², Cell Temperature 25°C, Air Mass AM1.5.
*Measuring tolerance: ±3%.

ELECTRICAL DATA (NMOT)

Maximum Power-PMAX (Wp)	428	431	435	439	443	446
Maximum Power Voltage-VMPP (V)	39,43	39,61	39,76	39,90	40,08	40,22
Maximum Power Current-IMPP (A)	10,84	10,89	10,94	11,00	11,04	11,09
Open Circuit Voltage-VOC (V)	47,83	48,05	48,22	48,39	48,62	48,79
Short Circuit Current-ISC (A)	11,61	11,66	11,72	11,77	11,82	11,88

NMOT: Irradiance at 800W/m², Ambient Temperature 20°C, Wind Speed 1m/s.

MECHANICAL DATA

Solar Cells	N Type Mono-crystalline
Cell Orientation	144 cells (6×24)
Module Dimensions	2278×1134×35mm (±1%)
Weight	28kg
Front Glass	3,2mm, High Transmission, AR Coated Heat Strengthened
Frame	35mm Anodized Aluminium Alloy
J-Box	IP 68 rated and 30cm or (optional 130cm cable)
Cables	Photovoltaic Technology Cable 4.0mm ²
Connector	MC4 EVO2 / TS4

TEMPERATURE RATINGS

NMOT(Nominal Module Operating Temperature)	45°C (±2°C)
Temperature Coefficient of PMAX	-0.29 %/°C
Temperature Coefficient of VOC	-0.25 %/°C
Temperature Coefficient of ISC	+0.048%/°C

MAXIMUM RATINGS

Operational Temperature	-40~+85°C
Maximum System Voltage	1500V DC (IEC)
Max Series Fuse Rating	25A

WARRANTY

12 year Product Workmanship Warranty
30 year Power Warranty
1% first year degradation
0.40% Annual Power Attenuation

(Please refer to product warranty for details)

PACKAGING CONFIGURATION

Modules per box	33 pcs
Modules per 40' Container	726 pcs

