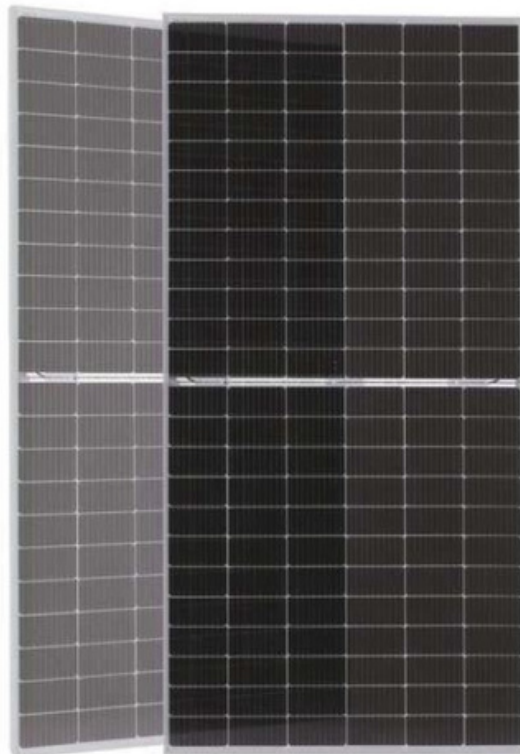


LEXRON

FOR A LIVEABLE WORLD



HALF CUT

144 CELL

MONOCRYSTALLINE MODULE

525–550W

POWER OUTPUT RANGE

22.36%

MAXIMUM EFFICIENCY

0~+5W

BINNING TOLERANCE

10BB

MULTI BUSBAR

BIFACIAL

PERC CELL TECHNOLOGY



HIGH POWER MODULE

High module conversion efficiency (up to 21.28%), through superior manufacturing technology



POSITIVE TOLERANCE

Guaranteed 0– +5W positive power output tolerance ensures high reliability



SELF CLEANING

Anti-reflective, hydrophobic coating improves light absorption and reduces surface dust



STRONG AIR RESISTANCE

Entire module certified to withstand high wind loads (2400 Pascal) and snow loads (5400 Pascal)*



HIGH PERFORMANCE

Excellent performance under low light environments (mornings, evenings and cloudy days)

SYSTEM CERTIFICATES

IEC61215/IEC61730/IEC61701/IEC62716

ISO 9001: Quality Management System

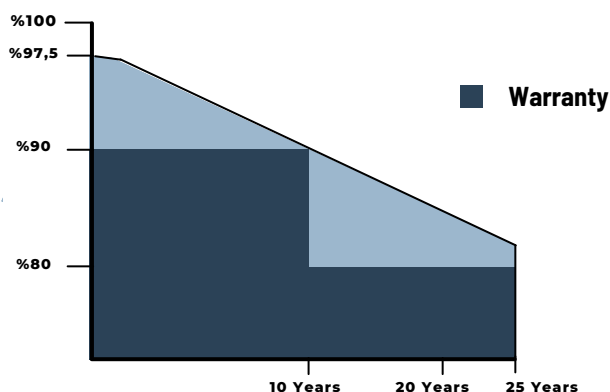
ISO 14001: Environmental Management

ISO 45001: Occupational Health and Safety

LEXRON

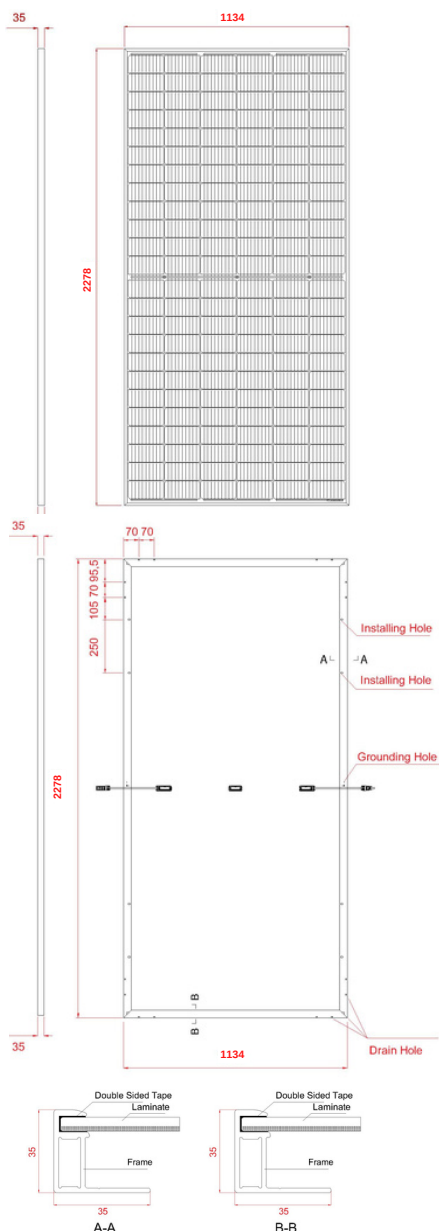
FOR A LIVEABLE WORLD

Industry-leading warranty

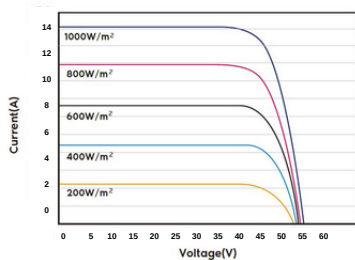


144 CELL HALFCUT MONO BIFACIAL DATASHEET

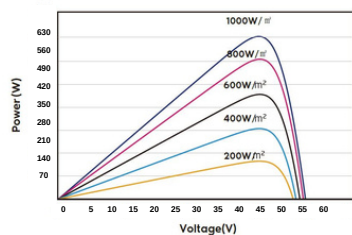
DIMENSIONS OF PV MODULE(mm)



I-V CURVES OF PV MODULE(625W)



P-V CURVES OF PV MODULE(625W)



ELECTRICAL DATA (STC)

	525W	530W	535W	540W	545W	550W
Nominal Maximum	525W	530W	535W	540W	545W	550W
Open CIRCUIT Voltage (Voc)	49,56V	49,68V	49,8V	49,98V	50,16V	50,35V
Max Power Voltage (Vmp)	41,3V	41,4V	41,5V	41,65V	41,80V	41,96V
Short Circuit Current(Isc)	13,41A	13,5A	13,60A	12,97A	13,75A	13,83A
Max Power Current (Imp)	12,71A	12,80A	12,89A	13,68A	13,04A	13,11A
Module Efficiency	20,31%	20,51%	20,7%	20,89%	21,09%	21,28%
Operating Temperature	-40°C~+85°C					
Maximum System Voltage	1500V (IEC/UL)					
Maximum Series Fuse Rating	25A					
Application Classification	Class A					
Power Tolerance	0 ~ + 5W					

STC: Irradiance 1000W/m², Cell Temperature 25°C, Air Mass AM1.5.
*Measuring tolerance: ±3%.

MECHANICAL DATA

Cell Type	Mono-crystalline 182x91mm, 10BB
Cell Arrangement	144 (6x24)
Dimensions	2278 x 1134 x 35 mm
Weight	28kg
Front Cover	3.2mm Tempered Glass
Frame Material	Anodized Aluminum Alloy
J-BOX	IP67 / IP68
Cable	Photovoltaic Technology Cable 4.0mm ²
Connectors	MC4 EVO2 or MC4 Comparable
Standard Packaging (Modules per Pallet)	32pcs
Module Pieces per container (40' / 20')	704pcs / 320pcs

BIFACIAL OUTPUT-REAR SIDE POWER GAIN

Maximum Power (Pmax) (Wp) %5	551,25	556,5	561,75	567	572,25	577,5
Module Efficiency STC (%) %5	21,33%	21,53%	21,74%	21,94%	22,14%	22,35%
Maximum Power (Pmax) (Wp) %10	577,5	583	588,5	594	599,5	605
Module Efficiency STC (%) %10	22,35%	22,56%	22,77%	22,98%	23,20%	23,41%
Maximum Power (Pmax) (Wp) %15	603,75	609,5	615,25	621	626,75	632,5
Module Efficiency STC (%) %15	23,36%	23,58%	23,81%	24,03%	24,25%	24,47%

TEMPERATURE CHARACTERISTICS

Nominal Operating Cell Temperature (NOCT)	45±3°C
Temperature Coefficient of Pmax	-0.29%/°C
Temperature Coefficient of Voc	-0.250%/°C
Temperature Coefficient of Isc	0.045%/°C

WARRANTY

- 10 year Product Workmanship Warranty
- 25 year Power Warranty
- 2% first year degradation
- 0.45% Annual Power Attenuation

